



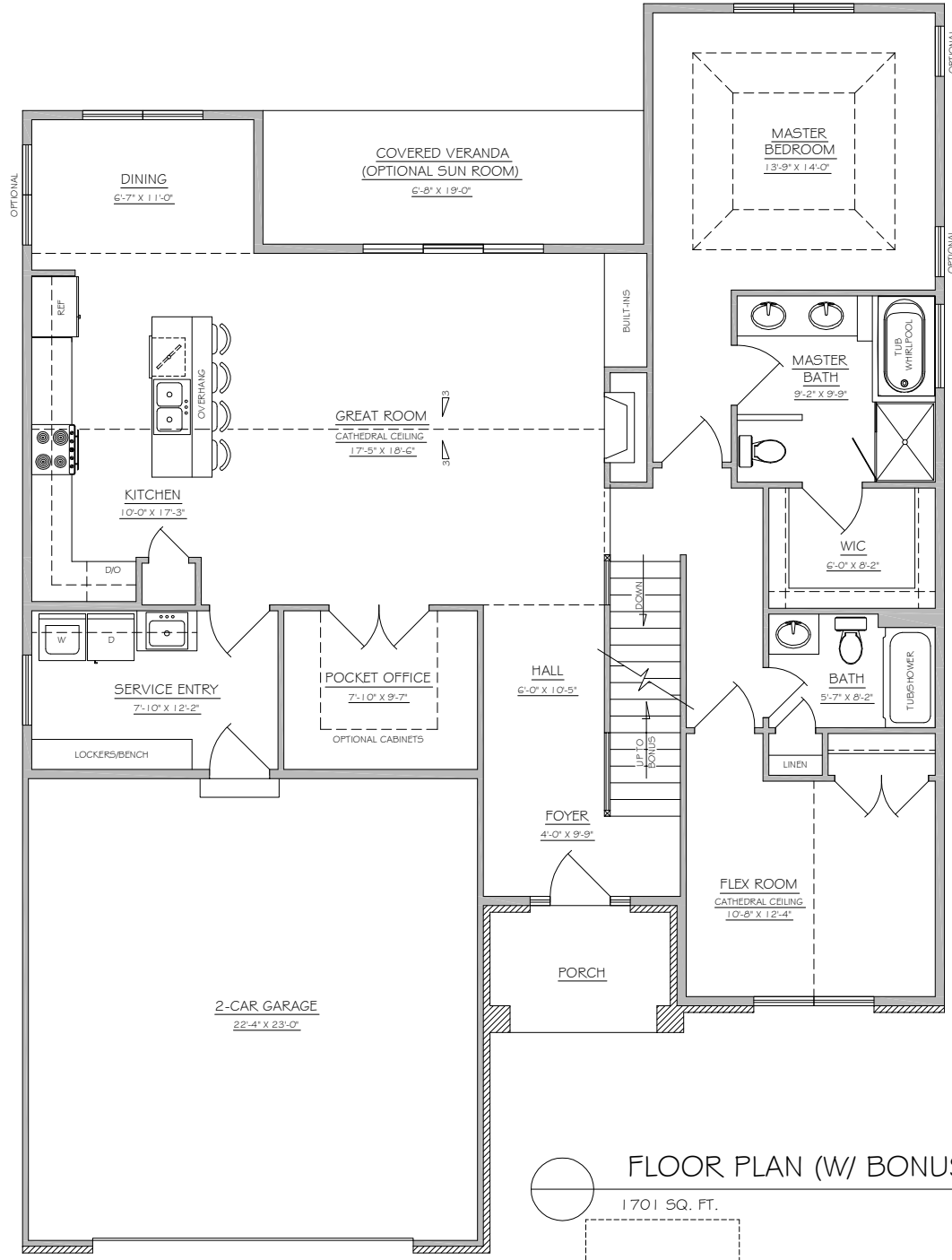
Wisteria Elevation A



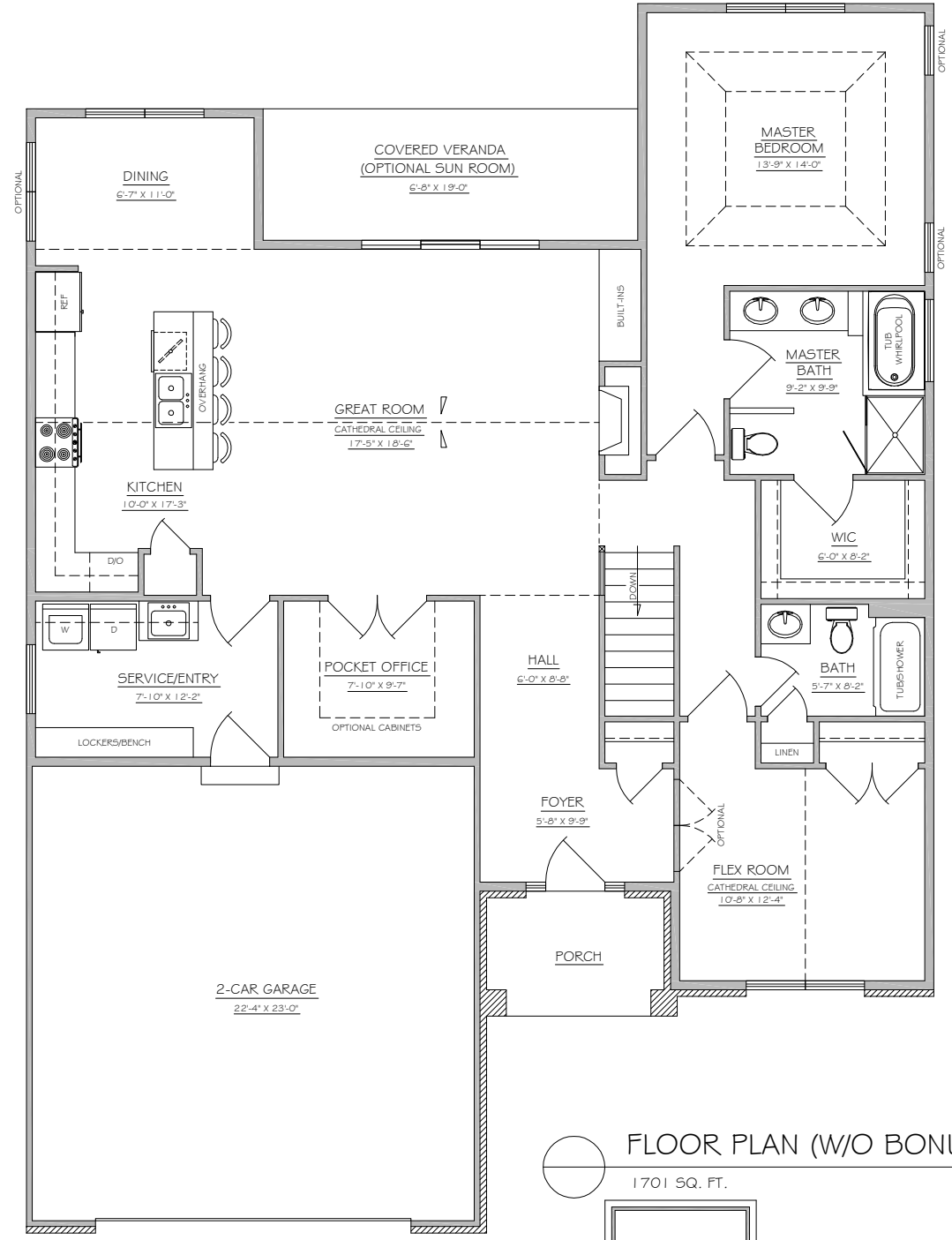
Wisteria Elevation B

Veranda: Airport Rd & Ft. Jesse Rd

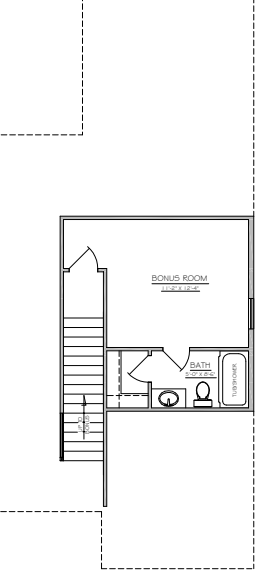
O'NEAL
BUILDERS



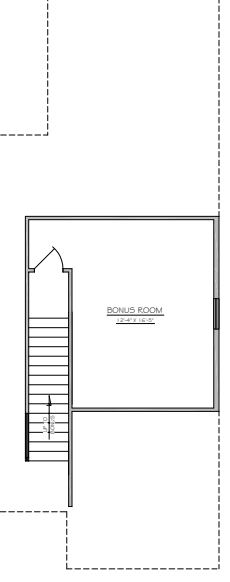
○ FLOOR PLAN (W/ BONUS)
 1701 SQ. FT. SCALE: NONE



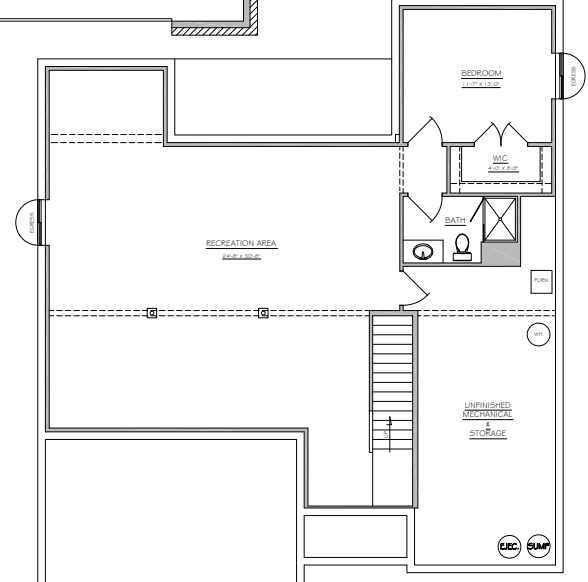
○ FLOOR PLAN (W/O BONUS)
 1701 SQ. FT. SCALE: NONE



○ SECOND FLOOR PLAN (W/ BATH)
 236 SQ. FT. SCALE: NONE



○ SECOND FLOOR PLAN (W/O BATH)
 236 SQ. FT. SCALE: NONE



○ FINISHED BASEMENT PLAN
 1130 SQ. FT. SCALE: NONE

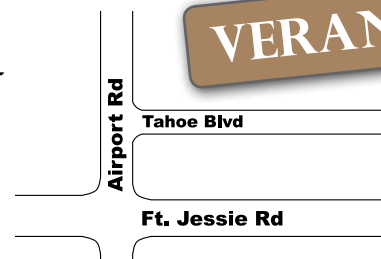
O'Neal

Included Features in All Veranda Homes

- Premium Home Sites in the Premiere Trails on Sunset Lake Community
- Expansive Lots, Private Lake, Walking Trails & Tree-lined Boulevards
- Main Floor Living & Functional Open Home Plans Catered To Your Needs
- Selections Made Through Our In-House Design Center with Assistance from Our Design Specialist
- Exquisite Exterior Facades with Brick & Stone Details
- Maintenance Free Exteriors
- 30 Year Architectural Shingles
- 2x6, 16" On Center Exterior Framed Walls
- Large Expansive Basements with Optional Bedrooms, Bathroom, Rec. Area, Bar & Storage
- Insulated Low-E Advanced Argon Glass Windows
- Gourmet Kitchen with Large Island and Sit-under area
- Gorgeous Granite Countertops in the Kitchen
- Hand Scraped Wide Plank Hardwood Floors
- Beautiful Tall Built-in Cabinets in Great Room (Plan Specific)
- Energy Efficient Homes with R-21 Insulation in all Exterior Walls & R-49 Ceiling Insulation
- Nine Foot Ceilings with Vault and Tray Ceilings (Plan Specific)
- Covered Veranda Porches with 14' x 16' Poured Concrete Patios
- Custom Tile Flooring, Tubs and Backsplashes (Plan Specific)
- Optional Bonus Rooms & Sun Rooms (Plan Specific)
- Insulated Garage (Walls & Ceiling) with 16 x 8 Insulated Garage Doors
- Garage Door Opener with 2 Remotes and Keyless Entry
- 95% Efficiency Single Stage Furnace with 13 Seer Central Air Conditioning
- Digital Programmable Thermostat & Whole House Humidifier
- 50 Gallon Natural Gas Water Heater
- Fireplace with Tile & Paint-Grade Mantle
- Stainless Steel Appliance Package with Dishwasher, Built-in Microwave, Single Wall Oven, 36" Cooktop, Range Hood & Side by Side Refrigerator
- Passive Radon Mitigation
- Permit Fees Included
- Landscaping & Irrigation Package Included
- Maintenance Packages Available for Lawn & Snow Removal
- 1-Year O'Neal Builders Limited Warranty
- Financing Available Through Our Preferred Lender

Veranda: Airport Rd & Ft. Jesse Rd

O'NEAL
BUILDERS



For details call Jim O'Neal today: 309-275-9292.

O'Neal